

**ITEM 40. PARKING – TIMED PERMIT PARKING – CARDIGAN STREET
GLEBE**

TRIM RECORD NO: 2016/230561

RECOMMENDATION

It is recommended that the Committee endorse the reallocation of parking on the northern side of Cardigan Street, Glebe, between the points 10 metres and 21 metres (two car spaces), and 46 metres and 56.6 metres (two car spaces), west of Bellevue Street as “2P 8am-6pm Mon-Fri Permit Holders Excepted Area G”.

VOTING MEMBERS FOR THIS ITEM

<i>Voting Members</i>	<i>Support</i>	<i>Object</i>
City of Sydney		
Roads and Maritime Services		
NSW Police – Leichhardt LAC		
Representative for the Member for Balmain		

DECISION

BACKGROUND

Residents of Cardigan Street has requested consideration for additional timed permit parking spaces to improve resident access to on-street parking.

COMMENTS

Parking is unrestricted on the northern side of Cardigan Street, Glebe.

On-site inspection shows that 90% of on-street parking in Cardigan Street is occupied during peak hours and that there is a need to provide more timed permit parking to increase parking turnover and improve resident access to on-street parking.

The proposed changes would limit any vehicle which does not have a permit to two (2) hours of parking from 8am to 6pm, Monday to Friday where the signs are installed.

Residents with an Area G parking permit will be exempt from the two-hour time limit.

A two-hour parking limit is preferred for streets in the inner residential areas as it better balances the long-stay parking needs of permit holders with the needs of all households to use parking for visitors, family, carers and tradespeople.

CONSULTATION

The City consulted local residents and businesses in the area. There were 69 letters sent out with one response supporting the proposal and one response opposing the proposal.

The submission opposing the proposal was concerned about the loss of unrestricted parking in Cardigan Street for visitors.

A two-hour parking limit is preferred for streets in the inner residential areas as it better balances the long-stay parking needs of permit holders with the needs of all households to use parking for visitors, family, carers and tradespeople.

FINANCIAL

Funds are available in the current budget.

ATTACHMENTS

Parking – Timed Permit Parking – Cardigan Street Glebe

Clement Lim, Senior Traffic Engineer



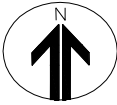
 EXISTING: UNRESTRICTED PARKING

 PROPOSED 2P 8AM – 6PM
MON-FRI Permit Holders
Excepted Area G

 EXISTING: NO STOPPING
NO CHANGES PROPOSED

 EXISTING: 2P 8AM – 6PM
MON-FRI
NO CHANGES PROPOSED

PROPOSAL



CARDIGAN STREET GLEBE PROPOSED PARKING CHANGES



